



# Installation Guide

FEOCEY X GEN1 Smart lock



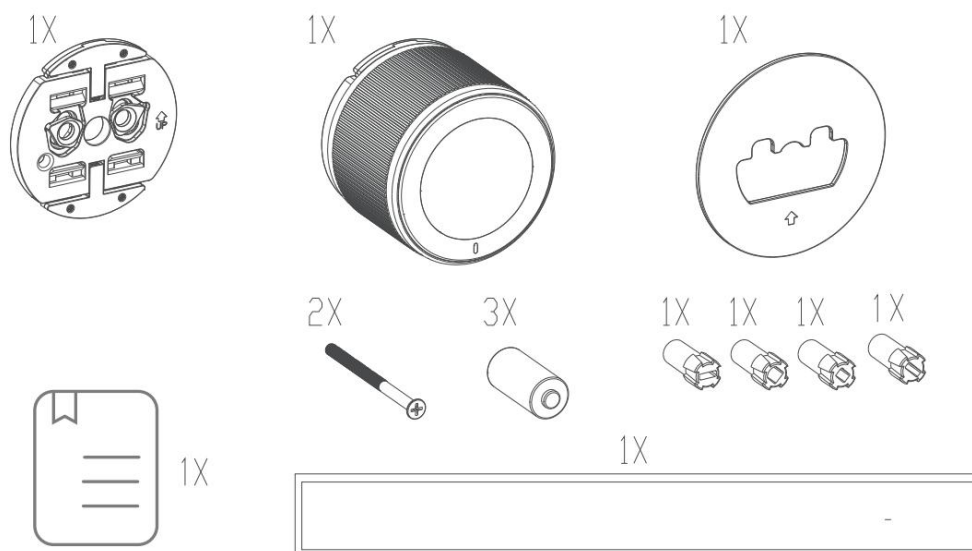
FEOCEY is committed to ensuring a smooth installation experience for you. For more information about your new smart device, please visit

<https://www.FEOCEY.com/smart-door-lock/>.

© 2026 Suzhou Fanxi Technology Co., Ltd. All rights reserved.



## Inside the box

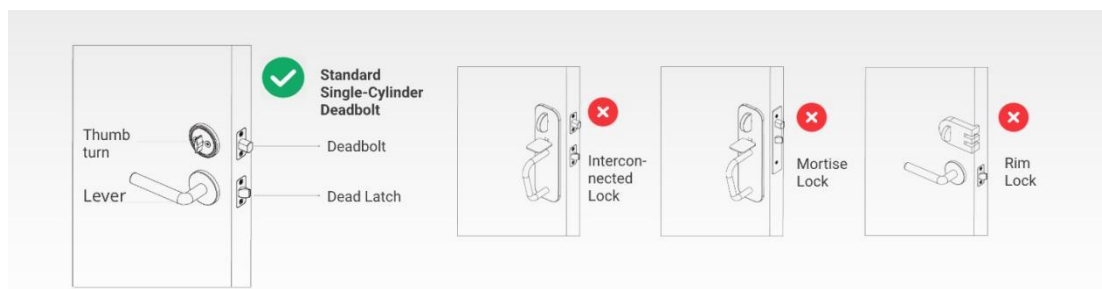


- ① Main lock body x 1
- ② Mounting bracket x 1
- ③ Face plate x 1
- ④ CR123A batteries x 3
- ⑤ User manual x 1
- ⑥ Adapters x 4
- ⑦ Long screw x 2
- ⑧ Fixing sticker x 1

## What you need

- ① Phillips Screwdriver
- ② FEOCEY Home App for iOS or Android
- ③ iOS or Android smartphone
- ④ Wi-Fi internet connection (802.11 b/g/n 2.4GHz)

## Door Compatibility



## Installation

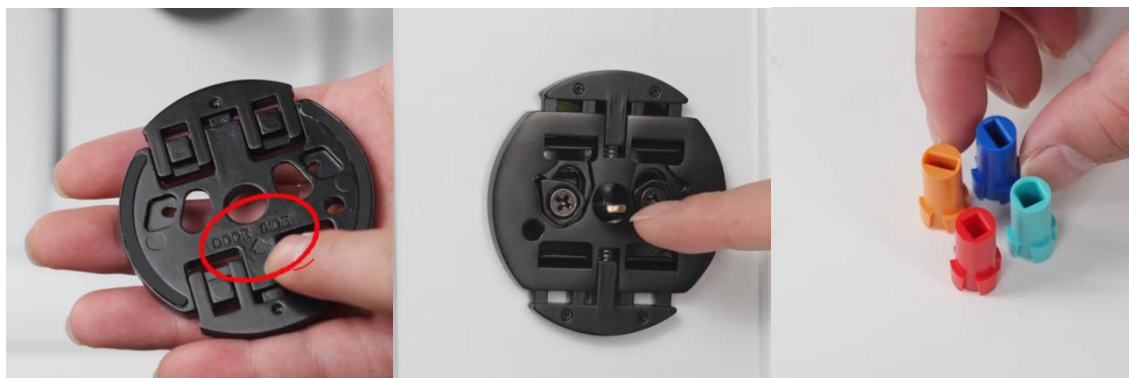
Step 1: Remove the existing thumb turn.

1. apply the tape to the front of the deadbolt.
2. unscrew the both screws.
3. remove the thumb turn from the interior side.



Step 2: Prepare the mounting plate and affix it to the deadbolt.

1. mount the " DOOR SIDE " against the door. (Note: optional face plate to cover gaps if the hole is too big).
2. insert the both long screws and screw them into the place.
3. select the correct mounting adapter, based on the deadbolt cylinder type, then insert it on the mount.



### Step 3: Install the FEOCEY X Smart lock.

Crucial installation note: Essential starting position. Always keep the LED light downward through out the installation.

#### 1. Left-handed Doors (stand outside the door):

If the latch extended, please rotate the smart lock's turn knob counterclockwise to end.

If the latch retracted, please rotate the smart lock's turn knob clockwise to end.

#### 2. Right-handed Doors (stand outside the door):

If the latch extended, please rotate the smart lock's turn knob clockwise to end.

If the latch retracted, please rotate the smart lock's turn knob counterclockwise to end.

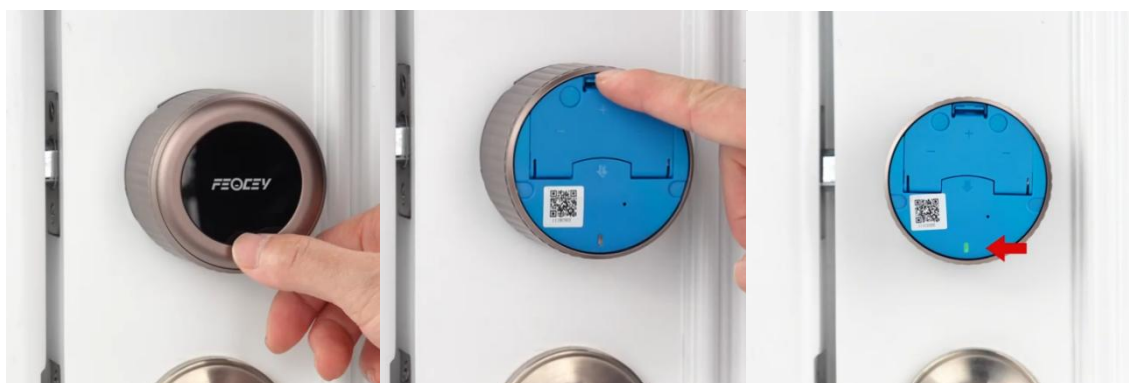




Only after completing these steps, should you mount the lock on to the plate.

#### Step 4: Power on the FEOCEY Smart lock.

1. press the LED light area, remove the smart lock cover.
2. open the inner battery compartment door, insert the 3 included CR123A batteries.
3. close the battery compartment door, the lock will power on automatically.



Reattach the smart lock cover. Now installation complete.

## How to remove the FEOCEY smart lock

The mounting bracket holds the smart lock in place via a bidirectional locking elastic clip mechanism. Simultaneously press the top and bottom of the bracket to detach the FEOCEY smart lock.

